

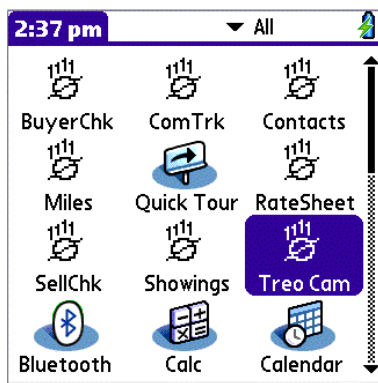
# Treo Camera

Treo Camera is a Palm Operating System program designed to take photographs using the Treo 650 and Treo 700p Smartphones, and to automatically save them as JPG files onto an expansion card. JPG photos on the expansion card can be e-mailed as attachments directly from the Treo smartphone and can be downloaded by inserting the expansion card directly into a PC's SD card slot. Additionally, photos can be taken with Treo 650 or Treo 700p smartphones for labeling and displaying right on the smartphone (i.e., embedding).

Treo Camera is easy to use and is especially well suited for the real estate industry, where it can be used to take photos of listings, potential buyers homes, etc. Photo location paths and names are labeled using this program, photos can be associated with specific listings and clients, and photos can be quickly retrieved.

This program has been written to take advantage of the features of the Palm Treo 650 and Treo 700p Smartphones, such as the 5-Way Navigation Button that allows one-handed navigation and selection of commands by using the Blue Focus Ring. This program is also designed with larger buttons so that users may navigate and make selections using their fingertips or fingernails.

In the instructions below, actions are shown with the "Blue Focus Ring" highlighting the appropriate button, pull down list, dates, etc. On a Treo Smartphone you have only to press down on the "Select Button" to trigger the action. Or, you may tap the item with your stylus or fingertip/fingernail.



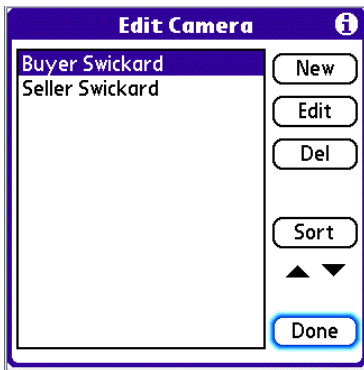
On our Treo's menu screen we select the "Treo Cam" icon. Note that with all actions on Treo smartphones you can scroll and select using your Treo's 5-Way Navigation Button and Blue Focus Ring highlighter.



The first screen in Treo Camera looks like this. Select the "Folder Path" field until Edit Categories appears in the field. We can now enter our buyers and sellers into the program. We've placed the word "Buyer" and "Seller" before the name to keep the files straight.



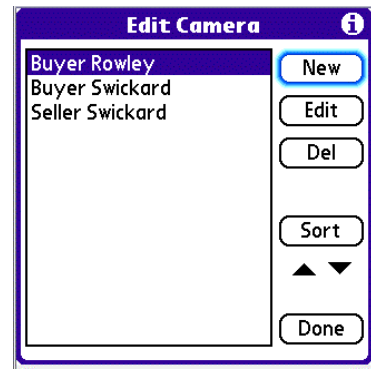
Shown above are several Folder paths, which will help us to keep our photos organized.



When we select the “Edit Categories” in the Select Folder Path we are taken to the “Edit Camera” screen from which we can add, edit, and delete our categories.



To add a category we select the “New” button, which pops up an “Edit” screen. After entering a category we select the “OK” button and the category is entered.



As shown above, our new category has been entered within the list and we have sorted all categories. When completed we select the “Done” button, which takes us back to the main screen.



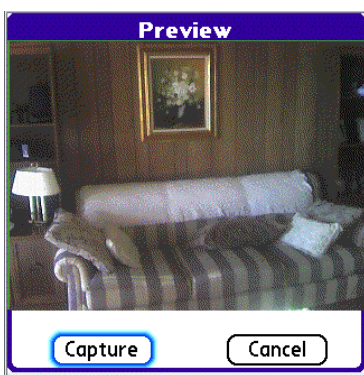
We now select the Category for the Folder path as shown above. By having multiple categories we may select one to use with multiple photographs.



Our next step is to name the individual photographs that we’ll take and add within our category. As an example we’ll title the photograph House 1.jpg. Note that you must enter “.jpg” after each photo’s name.



We are now ready to take our photograph. Highlight the “Take Photo” button and either select it with your select button, or tap the button with your finger or stylus.



Looking through your Treo’s screen we’ll see our photo subject. When satisfied with our photo composing, we select the “Capture” button.



Our captured photo is now shown on the screen. If satisfied with it we select the “OK” button.



Once we’ve taken our photograph we can view it by going to the “View” button paired with the “Take Photo” button. When a photo has been successfully taken the “Photo Saved” box will be checked, To take a new photo, select the “New” button, and to look at other photos we’ve taken select the “Prev” and “Next” buttons.



Now that we've taken photos we can e-mail them directly from our Treo 650 and Treo 700p smartphones. First, we select our e-mail program – in this case we're using Palm's Versamail that comes with our Treo. We enter the e-mail address of the recipient and the subject. Next, we select the attachment icon (paper clip) shown at the top of this screen.



The Attachments screen is brought up. Since our photos are saved directly onto the expansion card in Treo Camera, we must select "Files on Card" from the "Type". We'll be using a hypothetical file "AllAlbum.db" to demonstrate this feature, but our photo files would have a "jpg" extension.



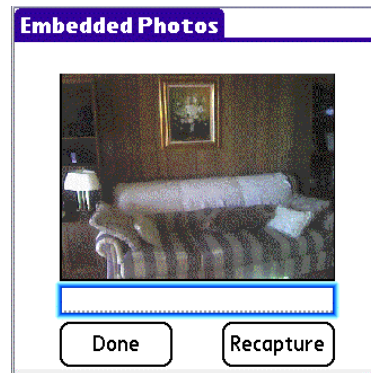
We locate the photo we want to e-mail and highlight it in the top box. Next we select the "Add" button to move the photo file into the "Attachments" box. After selecting the "Done" button we are taken back to the New Message screen. Select the "Send" button on the New Message screen and your e-mail with photo attachment will be sent.



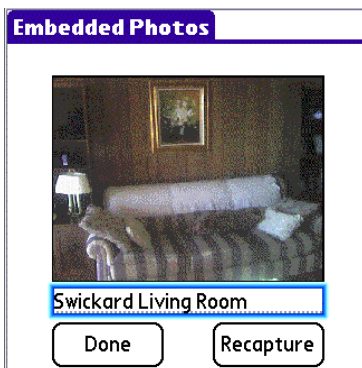
Now we'll take a photograph to embed within our Treo. This allows us to show other agents and clients' photos directly on our smartphone. This time we select the "Embed Photo" button.



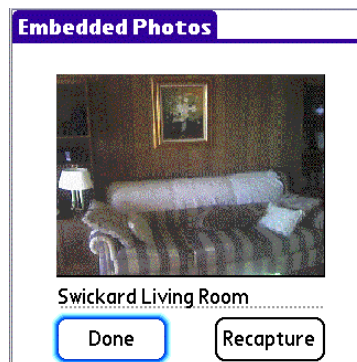
Our photos are captured exactly like with the "Take Photo" button. However, we use the "Viewer" button to go to the Embedded Photo page so that we may edit the form.



After selecting the "View" button we are taken to the above screen that shows our photograph. By selecting the field directly underneath the photo we can add a title to photos.



Using the photo that we took earlier we can name the subject.



When completed naming our photo we select the "Done" button and are taken to the main screen.



The buttons at the bottom of the main screen are used to manage our photos.